

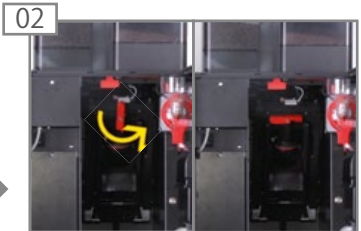
WEEKLY CLEANING OF THE A400/A600/A800/A1000

Perform daily cleaning. (See: "Daily cleaning")

Cleaning the brewing module



01 Open the door.



02 Release the brewing module lock in counterclockwise direction.



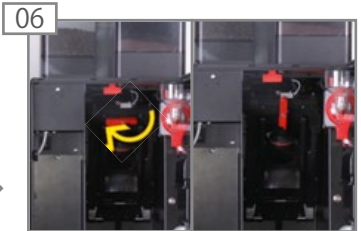
03 Remove the brewing module.



04 Clean the brewing module.



05 Insert the brewing module.



06 Lock the brewing module in clockwise direction.

Cleaning the steam wand



01 Fill container to approx. 5 cm with cold water and 30 ml of clean solution. Place under the steam wand for approx. 1 minute.



02 Select Autosteam/Steam. The steam wand is cleaned.



03 Empty the container. Fill the container with cold water and place under the steam wand.



04 Select Autosteam/Steam. The steam wand is rinsed.



05 Empty the container. Wipe the steam wand with a cloth.

Cleaning the bean hopper and powder container



01 Open the door.



02 Pull the locking slide all the way to the front.



03 Lift the bean hopper towards the top.
Empty the bean hopper.

NOTICE

Soiling, formation of mildew

The bean hopper dries slowly and can continue to release moisture during fitting.

- Do not bring the bean hopper into direct contact with water.
- Use only a damp cloth for cleaning.
- Remove detergent residue.



04 Rub down the bean hopper with a dry cloth.



05 Attach the bean hopper.



06 Lift the powder container towards the top.
Empty the powder container.



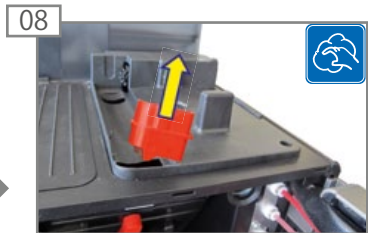
07 Clean the powder container with a cloth. Use detergent if necessary. Rub down the powder container with a dry cloth.

CAUTION

Cutting injuries/crushing

The powder container's conveyor mechanism can cause cuts or crushing injuries.

- Exercise care when cleaning the powder container.



08 Clean the powder chute with a brush.



09 Attach the powder container.



10 Push the locking slide all the way in.

NOTICE

Impairment of function

If the bean hopper and powder container are not locked correctly, this may impair both the function of the coffee machine and the product quality.

- Push the locking slide all the way in.



11 Close the door.

DAILY CLEANING OF THE A400/A600/A800/A1000



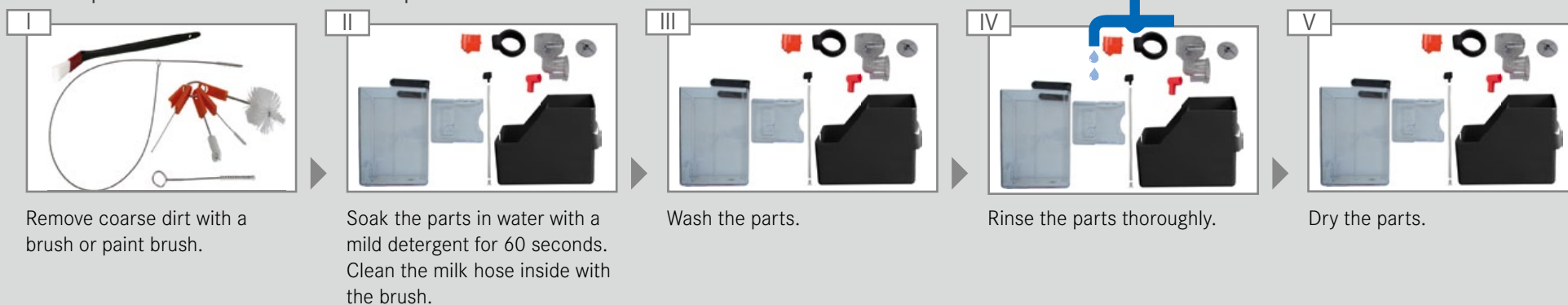
Your responsibility for the perfect coffee experience.
 The perfect coffee experience depends on a perfectly cleaned coffee machine. Increase the quality of your products!
 Clean your coffee machine at least once a day and more frequently if necessary.
 Follow the 5-step method for all removable parts.
 Please observe the **warnings** on the screen.

- Accessories required:
- Cleaning tablets
 - Microfiber cloth
 - Brush set
 - Cleaning agent for milk systems (depending on design version)

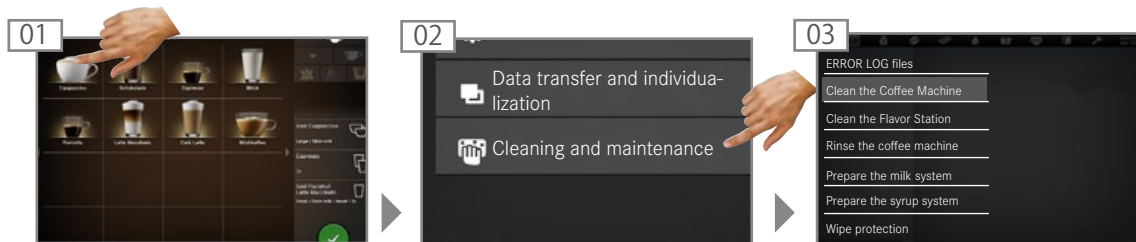


Symbol for cleaning

5-step method for removable parts



Starting the automatic cleaning on the screen for the A400/A600/A800 with EasyClean

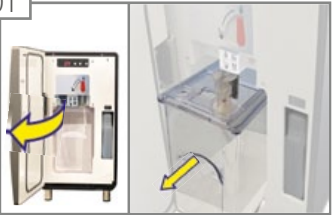


Follow the instructions on the operating interface and confirm with "Continue". The machine guides you to the next step.

After the cleaning cycle, the machine switches back to either the maintenance level or the energy saver mode. Your service technician can set the desired option for you.

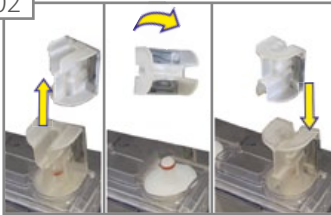
Starting automatic cleaning on the cooling unit with CleanMaster for the SU12 and A1000

01



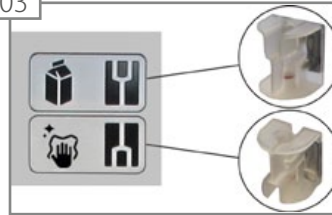
Open the door.
Pull the milk container to the front.


02



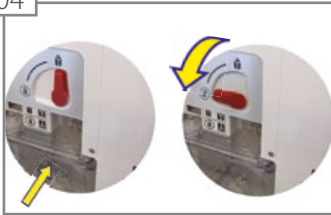
Pull the reversible adapter towards the top from the suction fitting.
Turn the reversible adapter 180°. Place the reversible adapter on the suction fitting.

03



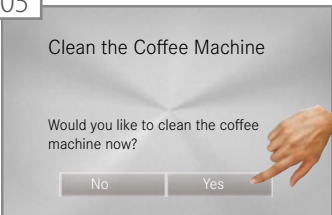
 The symbols indicate the correct position of the reversible adapter for milk delivery and cleaning.

04




Slide the milk container all the way in.
Rotate the cleaning lever to the "Cleaning" position.

05




The machine switches over automatically to cleaning mode. Press "Yes" to start the cleaning process.

 Follow the instructions on the operating interface and confirm with "Continue". The machine guides you to the next step. After the cleaning cycle, the machine switches back to either the maintenance level or the energy saver mode. Your service technician can set the desired option for you.


Starting automatic cleaning on the cooling unit with CleanMaster for the SU05

01



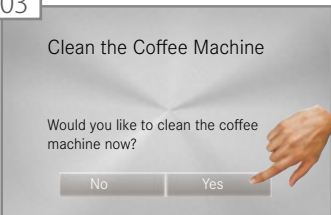
Open the door.
Remove the milk container and store the milk in a cool location.

02




Slide the cleaning container in.

03



The machine switches over automatically to cleaning mode. Press "Yes" to start the cleaning process.

 Follow the instructions on the operating interface and confirm with "Continue". The machine guides you to the next step. After the cleaning cycle, the machine switches back to either the maintenance level or the energy saver mode. Your service technician can set the desired option for you.

Changing cleaning agents for the CleanMaster

Unscrew the lid.
Slide the cartridge without the lid all the way in.
The seal is punctured automatically.

